

PIRATE'S COVE



CITRUS COUNTY, FLORIDA

APPLICATION FOR APPROVAL OF A DEVELOPMENT AGREEMENT

ATTACHMENT 4 *ZONING AND EXISTING LAND USES*

Bruce McLaughlin Consulting Services, Inc
Indian Rocks Beach, Florida
(727) 595-7634

C:\AtWork\Citrus\Decker\Development Agreement\Attachment 4.wpd

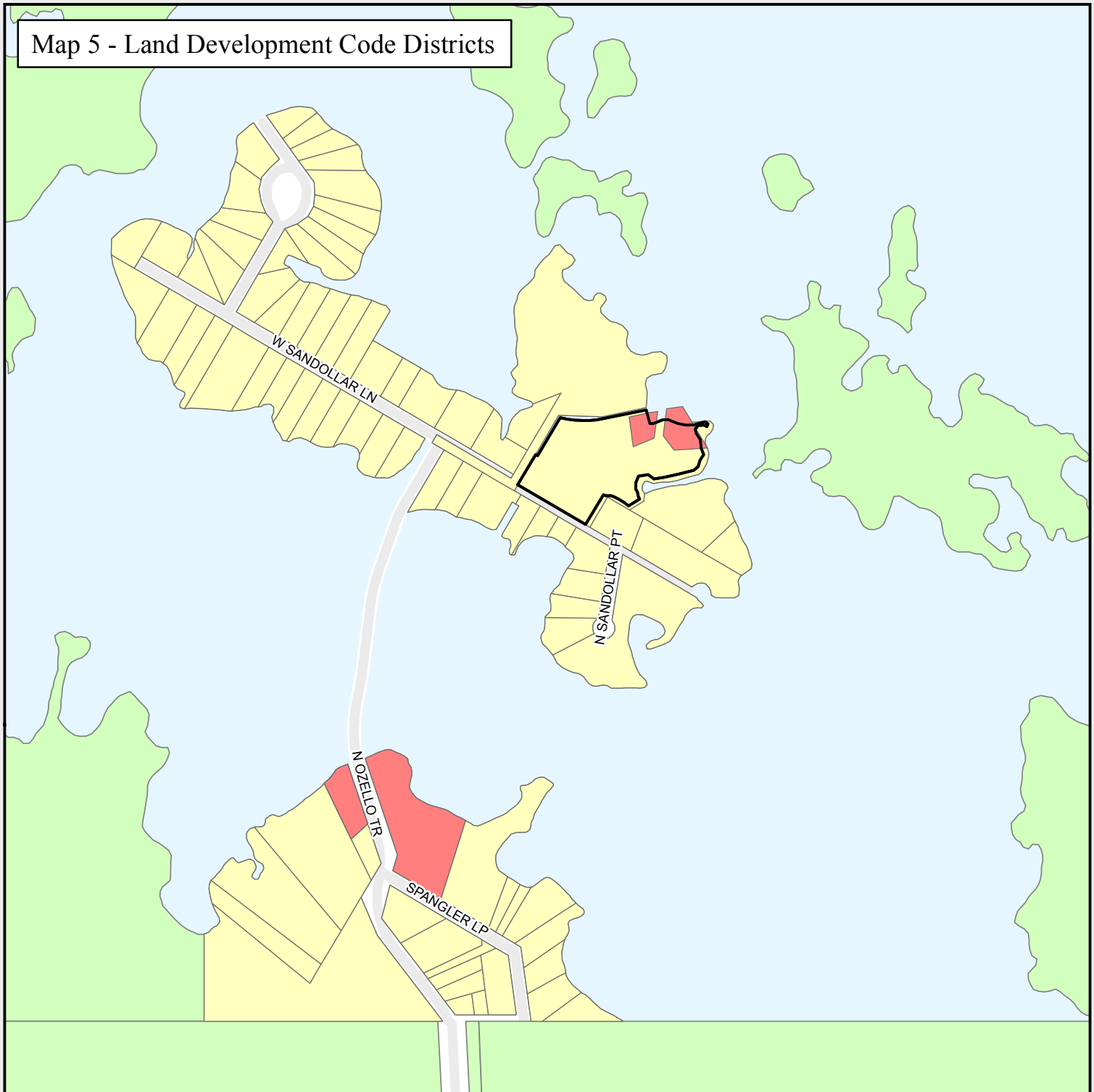
December 22, 2012

Revised




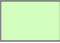
Printed December 22, 2012

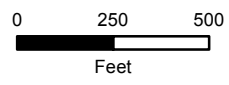
R. Bruce McLaughlin
Member, American
Institute of
Certified Planners
Registration 3051

Map 5 - Land Development Code Districts



Map Legend

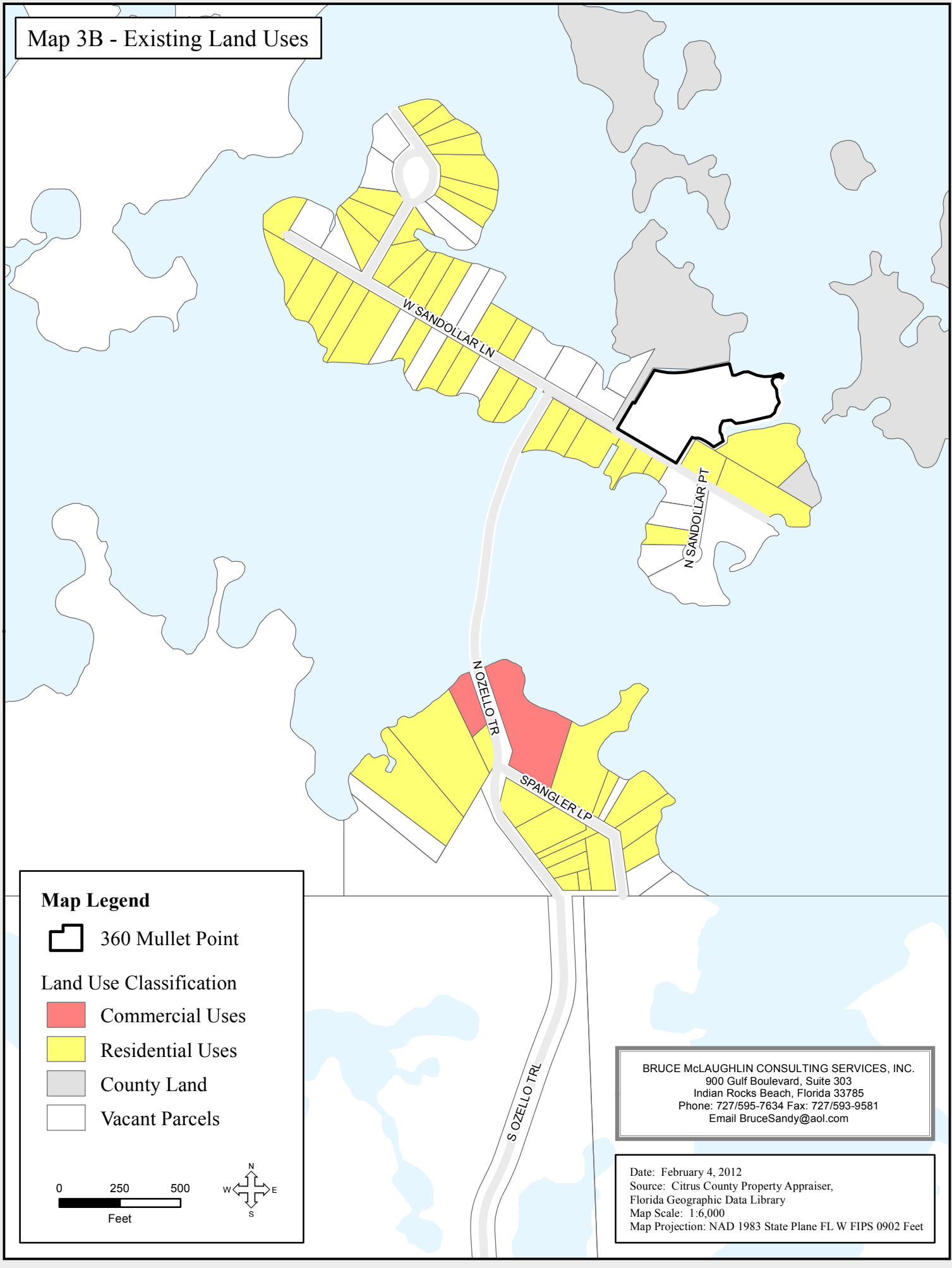
-  360 Mullet Point
-  CLC - Coastal and Lakes Commercial District
-  CLR - Coastal and Lakes Residential District
-  CON - Conservation District



BRUCE McLAUGHLIN CONSULTING SERVICES, INC.
 900 Gulf Boulevard, Suite 303
 Indian Rocks Beach, Florida 33785
 Phone: 727/595-7634 Fax: 727/593-9581
 Email BruceSandy@aol.com

Date: February 4, 2012
 Source: Citrus County Property Appraiser,
 Florida Geographic Data Library, Citrus County
 Map Scale: 1:6,000
 Map Projection: NAD 1983 State Plane FL W FIPS 0902 Feet

Map 3B - Existing Land Uses



Map Legend


 360 Mullet Point

Land Use Classification

 Commercial Uses

 Residential Uses

 County Land

 Vacant Parcels

0 250 500
Feet



BRUCE McLAUGHLIN CONSULTING SERVICES, INC.
900 Gulf Boulevard, Suite 303
Indian Rocks Beach, Florida 33785
Phone: 727/595-7634 Fax: 727/593-9581
Email BruceSandy@aol.com

Date: February 4, 2012
Source: Citrus County Property Appraiser,
Florida Geographic Data Library
Map Scale: 1:6,000
Map Projection: NAD 1983 State Plane FL W FIPS 0902 Feet