

PIRATE'S COVE



CITRUS COUNTY, FLORIDA

APPLICATION FOR APPROVAL OF A DEVELOPMENT AGREEMENT

ATTACHMENT 7 *DEMOLITION PLAN*

Bruce McLaughlin Consulting Services, Inc
Indian Rocks Beach, Florida
(727) 595-7634

C:\AtWork\Citrus\Decker\Development Agreement\Attachment 7.wpd

December 22, 2012

Revised

Printed December 24, 2012

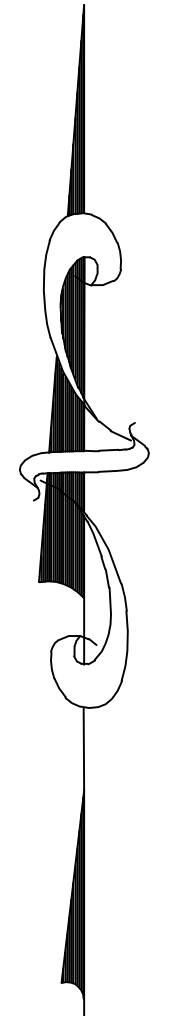
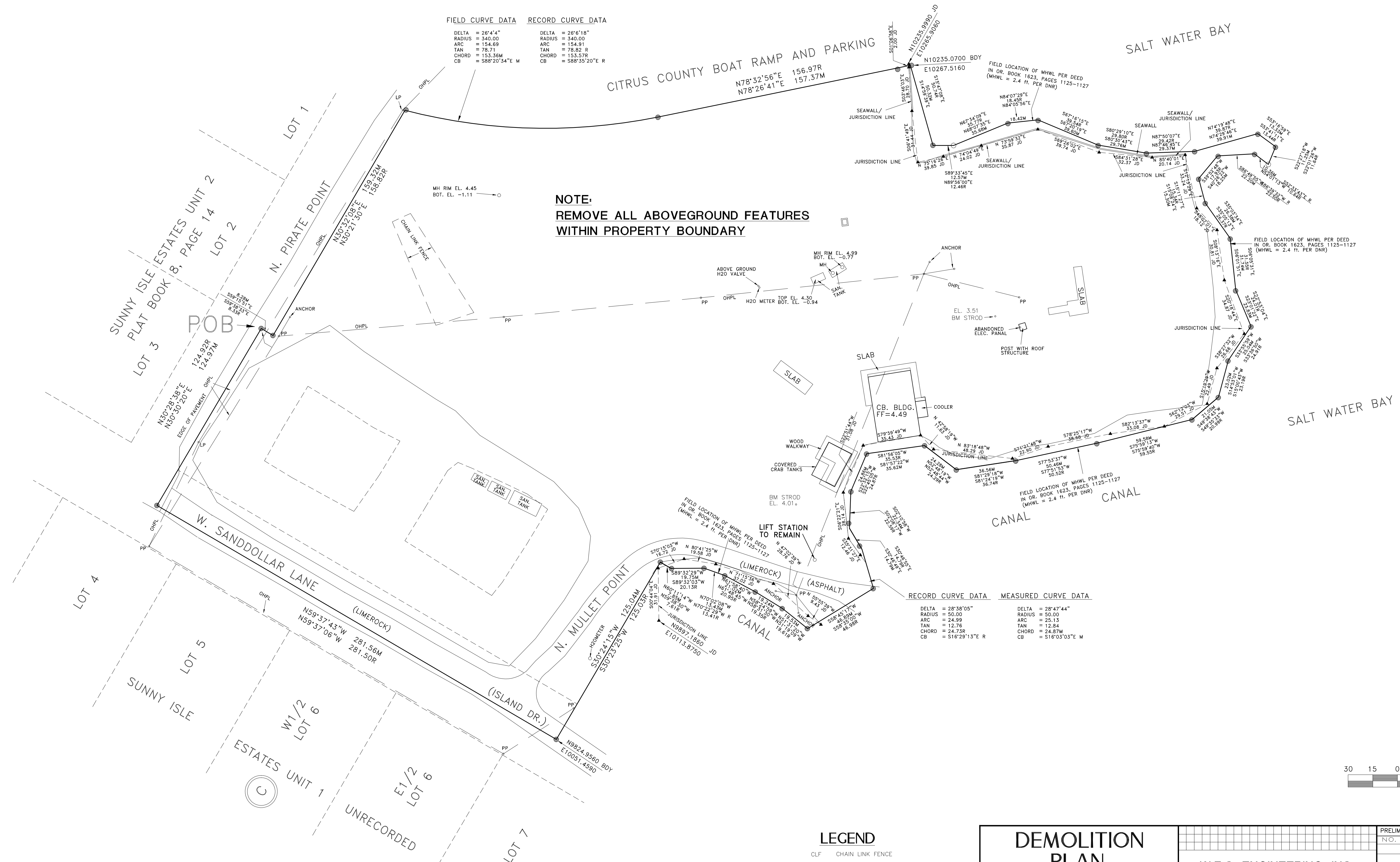
R. Bruce McLaughlin
Member, American
Institute of
Certified Planners
Registration 3051

FIELD CURVE DATA		RECORD CURVE DATA	
DELTA = 26°4'4"	RADIUS = 340.00	DELTA = 26°6'18"	RADIUS = 340.00
ARC = 154.69	TAN = 78.71	ARC = 154.91	TAN = 78.82 R
CHORD = 153.35M	CB = S88°20'34"E M	CHORD = 153.57R	CB = S88°35'20"E R

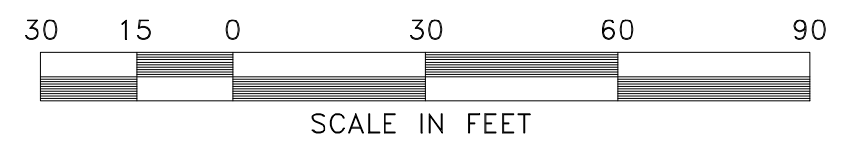
CITRUS COUNTY BOAT RAMP AND PARKING
 N78°32'56"E 156.97R
 N78°26'41"E 157.37M

NOTE:
 REMOVE ALL ABOVEGROUND FEATURES
 WITHIN PROPERTY BOUNDARY

RECORD CURVE DATA		MEASURED CURVE DATA	
DELTA = 28°38'05"	RADIUS = 50.00	DELTA = 28°47'44"	RADIUS = 50.00
ARC = 24.99	TAN = 12.76	ARC = 25.13	TAN = 12.84
CHORD = 24.73R	CB = S16°29'13"E R	CHORD = 24.87M	CB = S16°03'03"E M



SCALE: 1" = 30'



LEGEND

- CLF CHAIN LINK FENCE
- CONC. CONCRETE
- LP EXISTING LIGHT POLE
- PP* EXISTING POWER POLE
- OHPL OVERHEAD POWER LINE
- MH MANHOLE
- TOB TOP OF BANK
- SAN SANITARY
- ELEC ELECTRIC

DEMOLITION PLAN
PIRATE'S COVE
 Ozello, Citrus County, Florida

SEC. 34, T18, R16

PREPARED FOR:
GEORGE H. DECKER

W.F.C. ENGINEERING, INC.
 ENGINEERING
 LAND PLANNING & DESIGN
 Certificate of Authorization Number 00009541

Phone: (813) 264-7650 Email: fcarter3@ampabayrr.com
 Email: awhull@ambarqmail.com
 14918 Knotty Pine Place, Tampa, Florida 33625

PRELIMINARY: For Review Only		PLAN DATE: 12-5-2012	
NO.	REVISIONS	DATE	

SHEET NO. **3** OF **3**

WILLIAM F. CARTER, P.E. NO. 41852