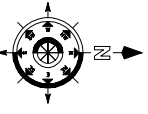
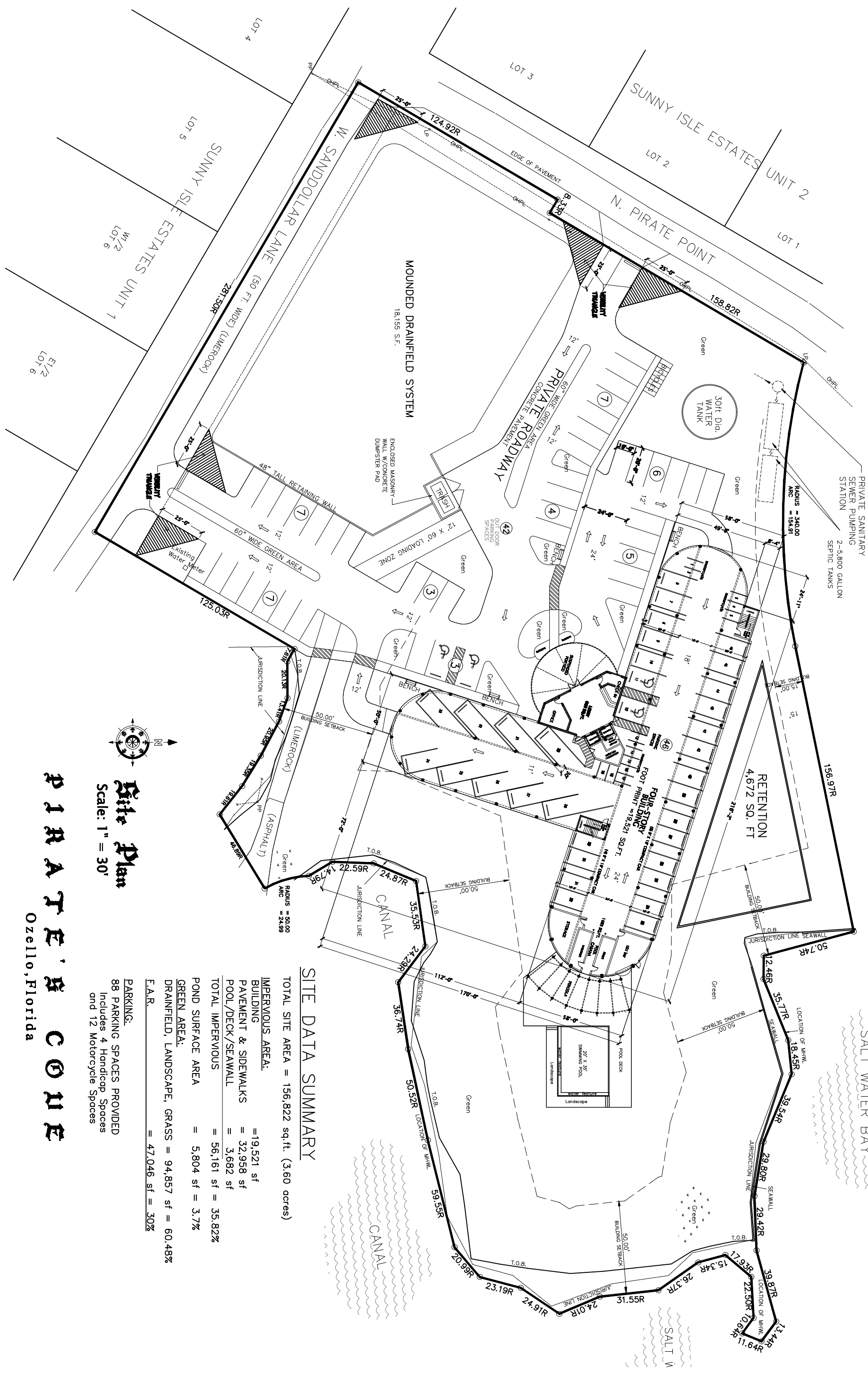


CITRUS COUNTY BOAT RAMP AND PARKING

SALT WATER BAY



Site Plan
Scale: 1" = 30'

SITE DATA SUMMARY

TOTAL SITE AREA = 156,822 sq.ft. (3.60 acres)

IMPERVIOUS AREA:	
BUILDING	= 19,521 sf
PAVEMENT & SIDEWALKS	= 32,958 sf
POOL/DECK/SEAWALL	= 3,682 sf
TOTAL IMPERVIOUS	= 56,161 sf = 35.82%
POND SURFACE AREA	= 5,804 sf = 3.7%
GREEN AREA:	
DRAINFIELD, LANDSCAPE, GRASS	= 94,857 sf = 60.48%
F.A.R.	= 47.046 sf = 30%

PARKING:
88 PARKING SPACES PROVIDED
Includes 4 Handicap Spaces
and 12 Motorcycle Spaces

P I R A T E ' S C O M E
Ozello, Florida